

A I S

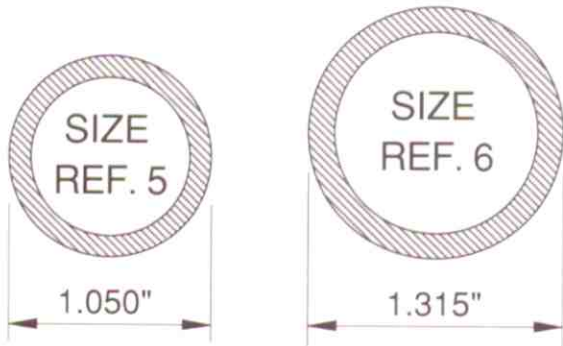
# Alvin Industrial

THE MANUFACTURER OF AIS  
PIPE AND TUBE CLAMPS



- AIS slip-on pipe clamps are made of malleable iron castings which are free of sharp edges. They have either a hot dipped galvanized or fluorocarbon finish with case hardened set screws
- Fluorocarbon is a smoother, cleaner finish that allows the threads in the AIS clamp to be coated. This process is more environmentally friendly and will out last the galvanized finish by more than a 2 to 1 ratio in salt spray testing
- AIS slip-on pipe clamps are designed to be used with standard pipe (Aluminum or Steel)
- Discover how easy it is to build strong structures such as railings, storage racks, work benches, outdoor shelters, boat docks, lighting grids, store fixtures, playground equipment, awning frames, solar panel frames and countless other applications using AIS clamps
- With the AIS clamps there is no welding, threading, drilling or bolting required for assembly. All connections are quick, strong and permanent, yet they can be quickly dismantled. Both pipe and clamps are 100% reuseable for other applications again and again
- Building contractors, plant operators and equipment manufacturers can save up to 70% on labour costs by using the AIS clamp system. A tape measure, pipe cutter and hex wrench are the basic tools needed for fabrication
- AIS clamps provide endless design opportunities for pipe construction, both pipes and clamps can be powder coated in various colours

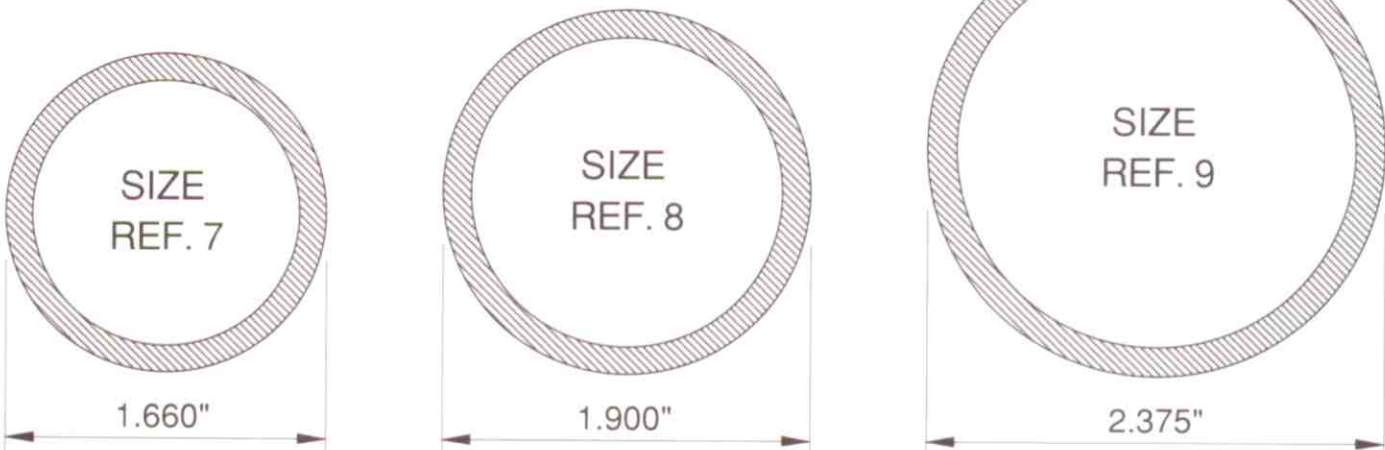
## STANDARD PIPE DIMENSIONS (SCH. 40 PIPE, FULL SIZE)



Size Ref.	Nom. Size (Inches)	Pipe O.D. (Inches)	Nom. Size (mm)	Pipe O.D. (mm)
5	3/4"	1.050"	20	26.7
6	1"	1.315"	25	33.4
7	1 1/4"	1.660"	32	42.2
8	1 1/2"	1.900"	38	48.3
9	2"	2.375"	50	60.3

Note:

ALVIN Clamps will also fit extra heavy and double extra heavy walled pipe and corresponding tube sizes





# AIS CLAMPS

A2 SINGLE SOCKET TEE		SIZE REF.	DIMENSIONS (inches)				WT. LB.
			A	B	C	D	
A2-5	1.73	1.42	2.44	1.22	0.48		
A2-6	2.13	1.73	2.99	1.50	0.79		
A2-7	2.40	2.13	3.50	1.69	1.17		
A2-7XB	2.72	2.36	3.82	2.01	1.41		
A2-8	2.72	2.36	3.86	1.93	1.52		
A2-8X7	2.56	2.13	3.78	1.85	1.28		
A2-9	3.39	2.95	4.88	2.64	2.60		

A3 30°- 60° SINGLE SOCKET TEE		SIZE REF.	DIMENSIONS (inches)				WT. LB.
			A	B	C	D	
A3-6	2.17	2.95	2.56	2.48	0.84		
A3-7	2.83	3.62	3.19	3.03	1.43		
A3-8	3.07	4.02	3.62	3.19	2.07		

A4 THREE SOCKET TEE		SIZE REF.	DIMENSIONS (inches)				WT. LB.
			A	B	C	D	
A4-5	3.46	1.69	2.44	0.51	0.86		
A4-6	3.74	1.85	2.72	0.55	1.15		
A4-7	4.72	2.36	3.43	0.71	1.96		
A4-8	5.51	2.76	3.94	0.75	2.58		
A4-9	6.73	3.35	4.80	0.75	4.28		

A6 90° ELBOW		SIZE REF.	DIMENSIONS (inches)				WT. LB.
			A	B	C	D	
A6-5	1.65	2.36	1.46	0.51	0.60		
A6-6	2.17	3.03	1.77	0.59	1.04		
A6-7	2.40	3.46	2.13	0.71	1.61		
A6-8	2.72	3.90	2.36	0.71	1.94		
A6-9	3.39	4.84	2.91	0.75	3.35		

A7 165°-105° VARIABLE ELBOW		SIZE REF.	DIMENSIONS (inches)				WT. LB.
			A	B	C	D	
A7-6	2.60	2.31	0.55	1.74	0.97		
A7-7	3.09	2.71	0.71	2.02	1.43		
A7-8	3.50	3.11	0.75	2.45	1.83		

A8 STRAIGHT COUPLING		SIZE REF.	DIMENSIONS (inches)				WT. LB.
			A	B	C	D	
A8-5	2.52	1.42	1.50	0.51	0.48		
A8-6	3.50	1.77	2.28	0.59	0.90		
A8-7	3.86	2.13	2.44	0.71	1.23		
A8-8	3.86	2.36	2.44	0.71	1.52		
A8-9	4.72	2.95	3.23	0.75	2.53		

A9 INTERNAL COUPLING		SIZE REF.	DIMENSIONS (inches)				WT. LB.
			A	B	C	D	
A9-6	3.07	0.83	0.98	1.10	1.34	0.60	
A9-7	3.07	0.79	1.34	1.10	1.65	0.97	
A9-8	3.07	0.98	1.61	1.02	1.93	1.39	

A10 STANDARD FLANGE		SIZE REF.	DIMENSIONS (inches)				WT. LB.
			A	B	C	D	
A10-5	2.48	1.89	3.19	0.20	0.24	0.79	
A10-6	2.56	1.89	3.31	0.24	0.24	0.93	
A10-7	2.91	2.09	3.74	0.28	0.28	1.34	
A10-8	3.27	2.20	4.13	0.39	0.28	1.68	
A10-9	3.90	2.60	5.04	0.39	0.28	2.56	

A12 RAILING FLANGE		SIZE REF.	DIMENSIONS (inches)				WT. LB.
			A	B	C	D	
A12-5	4.45	2.99	2.40	0.43	3.19	1.56	
A12-6	5.00	3.50	2.95	0.55	3.39	2.12	
A12-7	5.59	4.09	3.15	0.55	3.43	2.80	
A12-8	6.06	4.57	3.62	0.55	3.82	3.55	
A12-9	6.50	4.92	3.86	0.71	4.76	5.42	

A14 OFFSET RAILING FLANGE		SIZE REF.	DIMENSIONS (inches)				WT. LB.
			A	B	C	D	
A14-6	4.09	2.48	2.60	0.55	1.89	2.05	
A14-7	4.45	2.52	2.99	0.55	2.09	2.82	
A14-8	4.45	2.36	3.43	0.55	2.36	3.42	

A15 SIDE MOUNT FLANGE		SIZE REF.	DIMENSIONS (inches)					WT. LB.
			A	B	C	D	E	
A15-6	2.91	2.80	2.44	0.43	3.82	1.26		
A15-7	3.27	3.27	2.83	0.39	4.21	1.79		
A15-8	3.50	3.35	3.11	0.39	4.33	2.12		

A16 STANDARD OFFSET RAILING FLANGE		SIZE REF.	DIMENSIONS (inches)					WT. LB.
			A	B	C	D	E	
A16-6	4.09	2.52	2.60	0.55	3.78	2.16		
A16-7	4.49	2.52	2.99	0.55	4.21	2.89		
A16-8	4.45	2.52	3.39	0.55	4.57	3.46		

A17 GROUND SOCKET FLANGE		SIZE REF.	DIMENSIONS (inches)					WT. LB.
			A	B	C	D	E	
A17-6	5.47	5.20	4.06	0.24	0.51	3.42		
A17-7	5.47	5.20	4.06	0.24	0.51	3.35		
A17-8	5.47	5.20	4.06	0.24	0.51	3.28		

A18 SIDE OUTLET ELBOW		SIZE REF.	DIMENSIONS (inches)					WT. LB.
			A	B	C	D	E	
A18-5	1.77	2.56	2.56	1.06	0.95			
A18-6	2.09	3.11	3.11	1.30	1.41			
A18-7	2.60	3.82	3.82	1.61	2.20			
A18-8	2.83	4.09	4.09	1.65	2.87			
A18-9	3.27	4.84	4.84	1.85	4.47			

A20 SIDE OUTLET TEE		SIZE REF.	DIMENSIONS (inches)					WT. LB.
			A	B	C	D	E	
A20-5	1.81	2.60	1.42	1.10	0.73			
A20-6	2.09	3.03	1.73	1.22	1.08			
A20-7	2.56	3.66	2.09	1.50	1.70			
A20-8	2.76	3.94	2.36	1.57	2.16			
A20-9	3.35	4.80	2.91	1.85	3.35			

A21 ADJUSTABLE SIDE OUTLET TEE 90°-180°		SIZE REF.	DIMENSIONS (inches)					WT. LB.
			A	B	C	D	E	
A21-5	2.28	3.23	1.54	0.86				
A21-6	2.52	3.46	1.73	1.32				
A21-7	2.87	4.02	2.13	2.05				
A21-8	3.27	4.45	2.40	2.58				

A22 TWO SOCKET CROSS		SIZE REF.	DIMENSIONS (inches)					WT. LB.
			A	B	C	D	E	
A22-5	3.39	1.46	2.36	1.69	0.66			
A22-6	3.94	1.77	2.76	1.97	0.97			
A22-7	4.76	2.13	3.31	2.36	1.59			
A22-8	5.91	2.40	4.33	2.95	2.20			
A22-9	6.77	2.95	5.31	3.39	3.50			

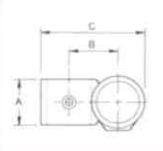
A23 30°- 45° ADJUSTABLE CROSS		SIZE REF.	DIMENSIONS (inches)					WT. LB.
			A	B	C	D	E	
A23-6	5.71	1.77	2.28	0.55	1.34			
A23-7	7.44	2.13	2.99	0.67	2.36			
A23-8	8.86	2.40	3.46	0.71	3.20			

A24 SIDE OUTLET TEE		SIZE REF.	DIMENSIONS (inches)					WT. LB.
			A	B	C	D	E	
A24-5	3.31	1.73	2.44	0.91	0.84			
A24-6	4.02	1.89	2.83	1.10	1.28			
A24-7	4.88	2.40	3.50	1.34	1.96			
A24-8	5.59	2.80	4.02	1.57	2.64			
A24-9	6.73	3.39	4.88	1.89	4.34			

A26 FOUR SOCKET CROSS		SIZE REF.	DIMENSIONS (inches)					WT. LB.
			A	B	C	D	E	
A26-6	4.21	0.51	1.22	1.73	1.90			
A26-7	4.88	0.71	1.38	2.13	2.84			
A26-8	5.59	0.71	1.61	2.36	3.55			
A26-9	6.89	0.71	1.93	2.91	6.33			

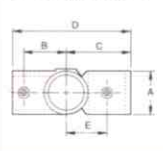
# AIS CLAMPS

## A28 OFFSET CROSSOVER



SIZE REF.	DIMENSIONS (inches)					WT. LB.
	A	B	C	D	E	
A28-5	1.77	1.38	2.83			0.71
A28-6	1.81	1.61	3.43			0.86
A28-7	2.13	1.97	4.09			1.39
A28-8	2.36	2.17	4.65			1.79
A28-9	2.40	2.64	5.63			2.58

## A30 TEE AND OFFSET CROSS COMBINATION



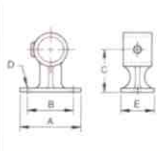
SIZE REF.	DIMENSIONS (inches)					WT. LB.
	A	B	C	D	E	
A30-5	1.57	1.10	1.89	3.74	1.38	0.64
A30-6	1.77	1.50	2.52	4.65	1.69	1.17
A30-7	2.17	1.69	3.07	5.43	2.01	1.85
A30-8	2.36	2.28	3.31	6.38	2.01	2.38
A30-9	2.52	2.80	4.21	7.60	2.60	4.30

## A32 CLAMP-ON TEE



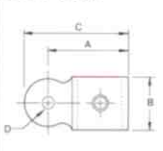
SIZE REF.	DIMENSIONS (inches)				WT. LB.
	A	B	C	D	
A32-6	2.13	3.35	2.44	0.35	0.86
A32-7	2.48	3.90	2.83	0.35	1.26
A32-8	2.91	4.37	3.11	0.35	1.65

## A34 OFFSET RAIL SUPPORT



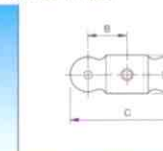
SIZE REF.	DIMENSIONS (inches)					WT. LB.
	A	B	C	D	E	
A34-5	3.07	2.24	2.17	0.31	1.77	0.86
A34-6	3.62	2.44	2.24	0.39	1.73	1.01
A34-7	4.37	3.31	2.32	0.39	1.97	1.45
A34-8	4.41	3.31	2.64	0.39	2.20	1.83

## A36 SINGLE SWIVEL SOCKET MALE



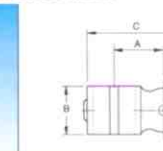
SIZE REF.	DIMENSIONS (inches)				WT. LB.
	A	B	C	D	
A36-5	2.20	1.54	2.99	0.39	0.51
A36-6	2.64	1.54	3.43	0.39	0.57
A36-7	2.99	1.77	3.78	0.39	0.77
A36-8	3.31	1.85	4.06	0.39	0.88
A36-9	3.82	2.09	4.61	0.39	1.30

## A38 DOUBLE SWIVEL SOCKET MALE



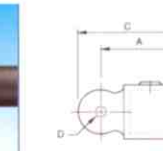
SIZE REF.	DIMENSIONS (inches)					WT. LB.
	A	B	C	D	E	
A38-6	1.54	1.69	5.00	0.39	0.75	
A38-7	1.77	1.97	5.39	0.39	0.97	
A38-8	1.85	2.20	5.75	0.39	1.08	

## A40 CORNER SWIVEL SOCKET MALE



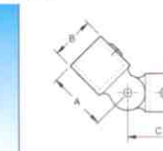
SIZE REF.	DIMENSIONS (inches)					WT. LB.
	A	B	C	D	E	
A40-6	1.77	1.54	3.43	0.39	0.77	
A40-7	1.97	1.77	3.78	0.39	0.97	
A40-8	2.13	1.85	4.13	0.39	1.12	

## A42 SWIVEL SOCKET FEMALE



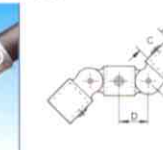
SIZE REF.	DIMENSIONS (inches)					WT. LB.
	A	B	C	D	E	
A42-5	2.40	1.42	3.11	0.39	0.64	
A42-6	2.56	1.73	3.35	0.39	0.84	
A42-7	2.91	2.13	3.62	0.39	1.12	
A42-8	3.19	2.36	3.94	0.39	1.37	
A42-9	3.50	2.91	4.29	0.39	2.01	

## A44 SINGLE SWIVEL SOCKET



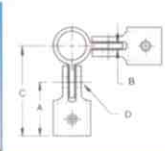
SIZE REF.	DIMENSIONS (inches)					WT. LB.
	A	B	C	D	E	
A44-5	2.40	1.42	2.20	1.54	1.19	
A44-6	2.56	1.73	2.64	1.54	1.48	
A44-7	2.91	2.13	2.99	1.77	1.98	
A44-8	3.19	2.36	3.31	1.85	2.31	
A44-9	3.50	2.91	3.82	2.09	3.37	

## A46 DOUBLE SWIVEL SOCKET



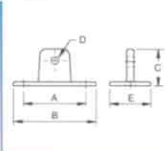
SIZE REF.	DIMENSIONS (inches)					WT. LB.
	A	B	C	D	E	
A46-6	2.56	1.73	1.42	1.69	2.71	
A46-7	2.91	2.13	1.69	1.97	3.37	
A46-8	3.19	2.36	2.01	2.20	3.97	

## A48 CORNER SWIVEL SOCKET



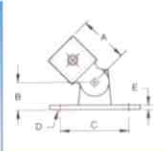
SIZE REF.	DIMENSIONS (inches)				WT. LB.
	A	B	C	D	
A48-6	2.56	0.39	4.41	0.39	2.53
A48-7	2.91	0.39	4.88	0.39	3.42
A48-8	3.19	0.39	5.31	0.39	4.06

## A50 SWIVEL FLANGE PLATE



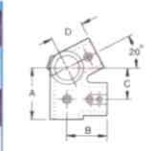
SIZE REF.	DIMENSIONS (inches)					WT. LB.
	A	B	C	D	E	
A50	3.31	4.41	2.01	0.39	1.81	0.77

## A52 SWIVEL FLANGE



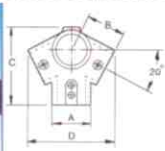
SIZE REF.	DIMENSIONS (inches)					WT. LB.
	A	B	C	D	E	
A52-5	2.40	1.38	3.31	0.47	0.28	1.50
A52-6	2.56	1.38	3.31	0.47	0.28	1.68
A52-7	2.91	1.38	3.31	0.47	0.28	1.98
A52-8	3.19	1.38	3.31	0.47	0.28	2.20
A52-9	3.50	1.38	3.31	0.47	0.28	2.84

## A54 SIDE OUTLET ELBOW & TEE COMBINATION



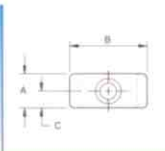
SIZE REF.	DIMENSIONS (inches)					WT. LB.
	A	B	C	D	E	
A54-6	2.87	2.83	1.57	1.97		1.76
A54-8	3.66	3.19	2.17	2.68		3.13

## A56 SIDE OUTLET TEE & ELBOW COMBINATION



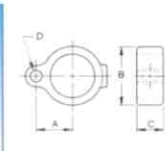
SIZE REF.	DIMENSIONS (inches)					WT. LB.
	A	B	C	D	E	
A56-6	1.77	2.13	4.06	4.61		1.52
A56-8	2.36	2.68	5.28	5.87		2.73

## A58 COLLAR



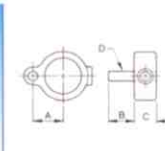
SIZE REF.	DIMENSIONS (inches)				WT. LB.
	A	B	C	D	
A58-6	0.94	1.73	0.47		0.24
A58-7	1.10	2.13	0.55		0.37
A58-8	1.10	2.36	0.55		0.42
A58-9	1.10	2.91	0.55		0.60

## A60 EYE FITTING



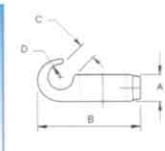
SIZE REF.	DIMENSIONS (inches)					WT. LB.
	A	B	C	D	E	
A60-6	1.30	1.73	0.94	0.55		0.42
A60-7	1.50	2.09	1.10	0.55		0.60
A60-8	1.65	2.36	1.10	0.55		0.66

## A62 PIN FITTING



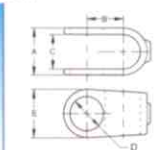
SIZE REF.	DIMENSIONS (inches)					WT. LB.
	A	B	C	D	E	
A62-6	1.30	0.94	0.94	0.51		0.55
A62-7	1.50	1.10	1.10	0.51		0.73
A62-8	1.65	1.10	1.10	0.51		0.79

## A64 HOOK FITTING



SIZE REF.	DIMENSIONS (inches)					WT. LB.
	A	B	C	D	E	
A64-6	0.94	3.39	0.79	0.87		0.42
A64-7	1.10	3.82	0.75	0.91		0.55
A64-8	1.10	4.09	0.67	0.91		0.66

## A66 OFFSET CROSSOVER



SIZE REF.	DIMENSIONS (inches)					WT. LB.
	A	B	C	D	E	
A66-5X5	1.73	1.10	1.10	1.10	1.65	0.53
A66-6X6	2.01	1.42	1.38	1.38	2.01	0.75
A66-7X6	2.40	1.54	1.69	1.38	2.05	0.82
A66-7X7	2.48	1.69	1.77	1.73	2.52	1.32
A66-8X7	2.72	1.81	2.01	1.73	2.52	1.48
A66-8X8	2.76	1.97	1.97	1.97	2.76	1.74



# CLAMPS

## A68 PLASTIC END CAP



SIZE REF.	DIMENSIONS (inches)					WT. LB.
	A	B	C	D	E	
A68-5	0.14	1.08	0.63	0.24	0.90	0.68
A68-6	0.17	1.31	0.71	0.31	1.11	1.41
A68-7	0.18	1.66	0.87	0.35	1.44	2.07
A68-8	0.18	1.93	0.94	0.35	1.70	2.95
A68-9	0.19	2.42	0.98	0.35	2.15	5.07

## A70 SINGLE PIPE CLIP BRACKET



SIZE REF.	DIMENSIONS (inches)		WT. LB.
	A	B	
A70-5	2.76	2.36	0.15
A70-6	2.91	2.44	0.17
A70-7	3.23	2.76	0.19
A70-8	3.31	2.91	0.20
A70-9	3.39	2.99	0.21

## A72 DOUBLE PIPE CLIP BRACKET



SIZE REF.	DIMENSIONS (inches)		WT. LB.
	A	B	
A72-5	2.76	2.36	0.26
A72-6	2.91	2.44	0.26
A72-7	3.23	2.76	0.28
A72-8	3.31	2.91	0.27
A72-9	3.39	2.99	0.31

## A73 RATCHET (3/8" DRIVE)



## A76 HEX. ALLEN KEY



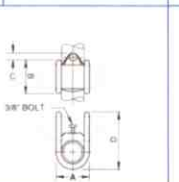
## A77 RATCHET SOCKET



## A78 SET SCREWS



## A79 ROTA - LOCK



SIZE REF.	DIMENSIONS (inches)				WT. LB.
	A	B	C	D	
A79-6	2.13	2.13	0.39	3.46	0.88
A79-7	2.48	2.48	0.51	4.17	1.26
A79-8	2.72	2.72	0.47	4.61	1.48
A79-9	3.23	3.23	0.63	5.59	2.16

## A84 SWIVEL TEE



SIZE REF.	DIMENSIONS (inches)				WT. LB.
	A	B	C	D	
A84-6	0.90	1.22	1.34	1.77	0.73
A84-7	1.08	1.46	1.67	2.17	1.15
A84-8	1.18	1.59	1.91	2.40	1.48

## A85 45° SINGLE SOCKET TEE



SIZE REF.	DIMENSIONS (inches)				WT. LB.
	A	B	C	D	
A85-7	2.51	1.61	0.69		1.52
A85-8	2.89	1.90	0.71		2.01

## A86 ALUMINUM SWIVEL



SIZE REF.	DIMENSIONS (inches)				WT. LB.
	A	B	C	D	
	A86-7X7	4.33	3.80	2.11	
A86-7X8	4.33	3.80	2.11	2.92	2.20
A86-8X8	4.33	3.80	2.11	3.04	2.20

## A91 ADJ. SIDE OUTLET TEE 45°-180°



SIZE REF.	DIMENSIONS (inches)				WT. LB.
	A	B	C	D	
A91-7	4.25	5.35	2.13		2.72
A91-8	4.75	5.90	2.40		3.22

## CH.HD. CLEVIS PIPE HANGER



SIZE REF.	A	B	C	D	WT. LB.
CH-HD-8	4.13	0.37	0.18	0.43	0.71

## TS TIN STRAP HANGER

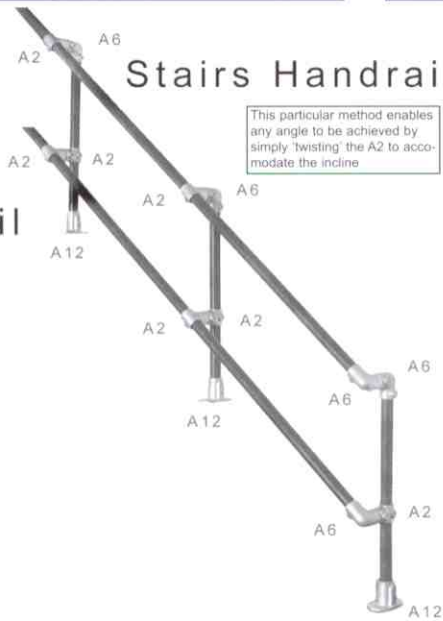


SIZE REF.	DIMENSIONS (inches)				WT. LB.
	A	B	C	D	
TS-5	2.31	3.18	0.05	0.01	0.05
TS-6	2.62	3.39	0.06	0.01	0.04
TS-7	3.37	4.25	0.06	0.02	0.10
TS-8	3.68	4.57	0.06	0.02	0.11
TS-9	4.25	5.16	0.06	0.02	0.13

## Safety Guardrail

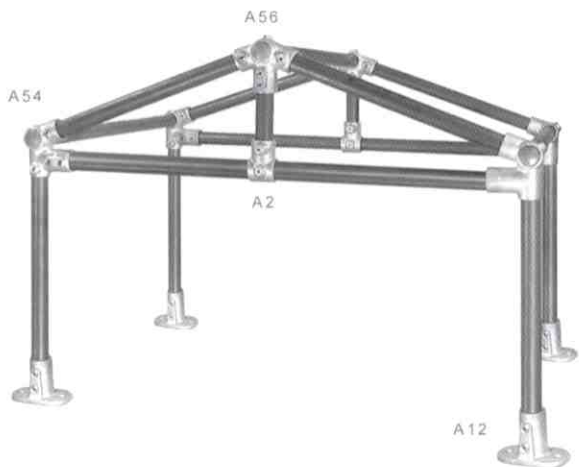


## Stairs Handrail



This particular method enables any angle to be achieved by simply 'twisting' the A2 to accommodate the incline.

## Outdoor Shelter



## Base Fixing Details



A10 BASE

A12 BASE

A14 BASE

A15 BASE

A16 BASE

A17 BASE (Concrete Insert)

